

Shanghai Couplings Fluid Tec. Ltd
Shanghai K.S. Fluid Tec. Ltd
Introduction of the products

E-mail: tinali02@126.com

Tel: +86 18621191382

Linkedin: [linkedin.com/in/tina-li-02865979](https://www.linkedin.com/in/tina-li-02865979)

Company introduction



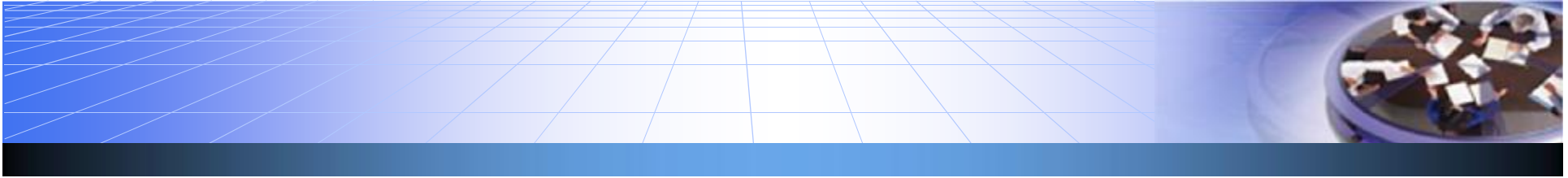
Shanghai Couplings Fluid Tec. Ltd (Shanghai K.S. Fluid Tec. Ltd) is a professional quick release couplings manufacturer integrating R&D, production, sales and service. The technical team has more than 20 years of hydraulic technology knowledge and experience. Currently, it is mainly responsible for global technical support, sales and after-sales service, and through the introduction of German technology, after learning, digestion and absorption, combined with customer characteristics for production.

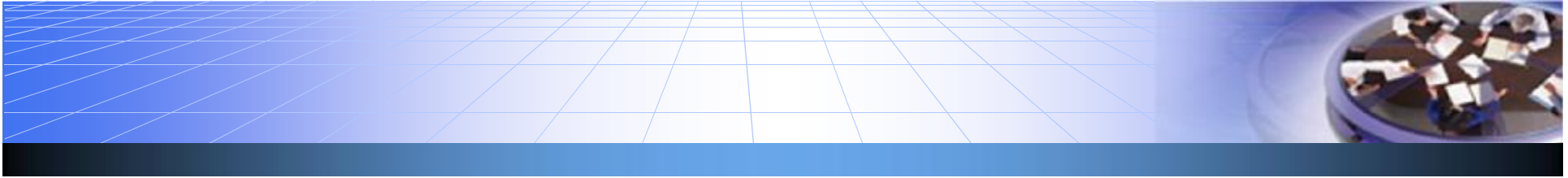
The factory is equipped with: a full series of American Haas (HAAS) machine tool production lines, Doosan (DOOSAN) machine tools, various non-standard customized automatic and semi-automatic quick coupling assembly machines, advanced experimental equipment and instruments, and a total of more than 40 sets of various types of equipment set.

The company's products are widely used in agricultural machinery, special vehicles, construction machinery, energy industry, shipbuilding industry, metallurgical manufacturing and industrial equipment. It is located in Chuansha Industrial Zone, Pudong New Area, Shanghai, with a production and storage area of more than 2,400 square meters and sufficient inventory to meet the timely needs of various application industries.

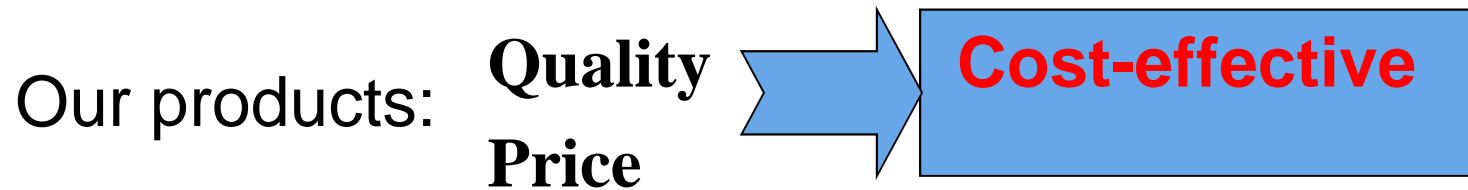
Factory Tour





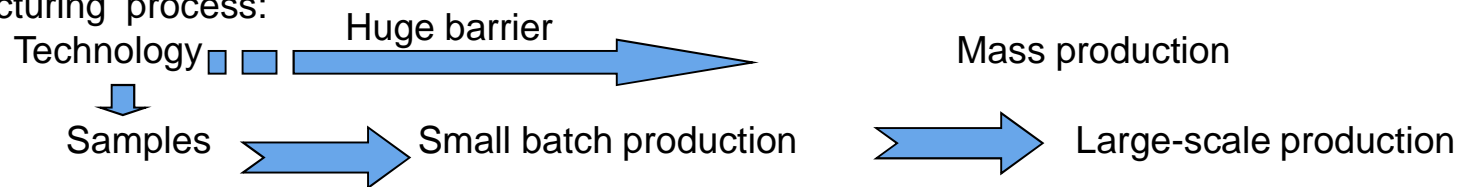


Competitive advantages



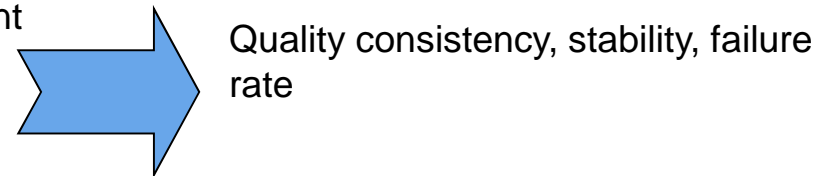
1. Technical capabilities: technical reserves, research and development capabilities, discovery, analysis and problem-solving capabilities, reaction speed, laboratory

2. Manufacturing process:



How to guarantee the technological level:

- Equipment (production, assembly, QC) investment
- German production process experience
- High-quality supporting supplier
- Advanced quality inspection standards



3. Scale efficiency: bulk purchase, mass production, cost reduction Example: quick coupling for tractors

4. Cost: a. Production cost: equipment, rent, wages, raw materials, outsourcing suppliers

b. Management costs: company operations, taxes, business marketing

5. Professional team, sales ability

Main products



- **FH** ISO 16028 FLAT FACE
- **FT** FLAT FACE SCREW TYPE
- **RK** PIPELINE COUPLINGS
- **RK/KL** FLAT FACE SCREW TYPE (**NEW!**)
- **MK** MULTI-COUPLINGS
- **PAV** ISO 7241-1 A POPPET
- **PPK** FOR TRACTORS ISO 7241-1 A POPPET
- **PBV** ISO 7241-1 B POPPET
- **PTK** WITH PRESSURE RELIEF VALVE TEMAT
- **HV** SCREW ON TYPE (**NEW!**)
- **HS** ISO 14541 SCREW ON TYPE
- **PVM/PVS** ULTRA HIGH PRESSURE 70MPA SCREW ON

FH ISO 16028 Flat Face



- Standard: ISO 16028
- Valve system: flat
- Locking: radial balls
- Optional material: Carbon steel, 316L Stainless Steel
- Finishing: Zn-Fe (Cr III) – Zn-Ni
- Thread: BSP – NPT – SAE
- Standard seals: NBR
- Working temperature: -25 °C +100 °C
- Optional seals: FKM, EPDM or more
- Working pressure: 350-400 bar
- Operation under pressure: Not allowed

FT FLAT FACE SCREW TYPE



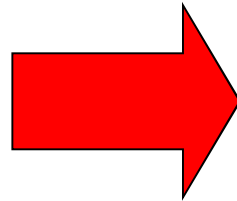
- Interchange: Interchangeable with similar couplings
- Occlusion: Flat face
- Locking : Screw
- Optional material: Carbon steel
- Finishing: Zn-Fe (Cr III) – Zn-Ni
- Thread: BSP – NPT – SAE
- Standard seals: NBR/PU
- Working temperature: -25 °C +100 °C
- Optional seals: FKM, EPDM or more
- Working pressure: 300-450 bar
- Operation under pressure: Operation under pressure Allowed
- Max operating pressure under pressure : 300bar

RK Pipeline Flat face Screw on Type



- Occlusion: Flat face
- Locking : Screw
- Optional material: Carbon steel
- Finishing Zn-Ni
- Thread: BSP – NPT – SAE
- Standard seals: NBR
- Working temperature: -25 °C +100 °C
- Optional seals: FKM, EPDM or more
- Working pressure: 420 bar
- Operation under pressure: Allowed
(Both male and female sides)

NEW!

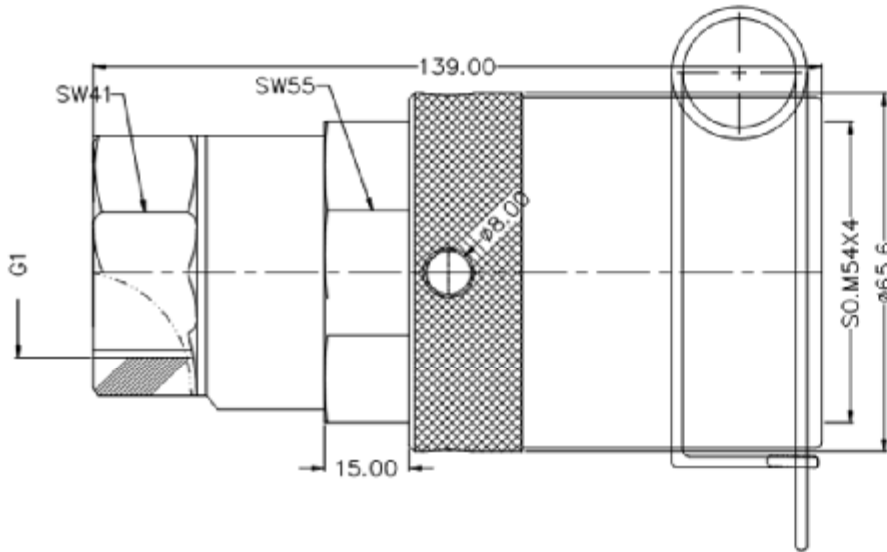
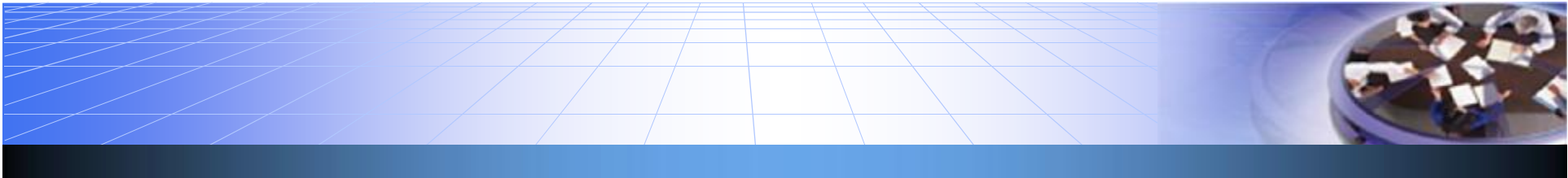


RK /KL Flat face Screw on Type

Dedicated to heavy load conditions and strong load conditions with high pulse, high vibration frequency and residual pressure disassembly operation

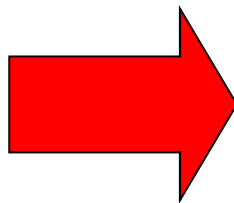


- Occlusion: Flat face
- Locking : Screw
- Optional material: Carbon steel、 **316L Stainless Steel, Titanium alloy**
- Finishing Zn-Ni
- Thread: BSP – NPT – SAE
- Standard seals: NBR
- Working temperature: -25 °C +100 °C
- Optional seals: FKM, EPDM or more
- Working pressure: 420 bar
- Operation under pressure: Allowed (Both male and female bodies)
- Adding safety lock-----locating pin
- Increase the thread length of the connecting sleeve and enhance the positioning guide

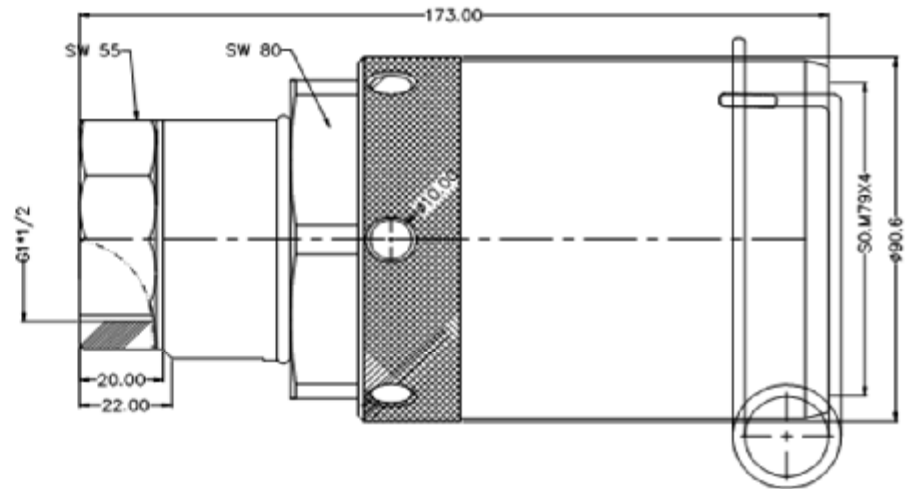


RK20/KL Maximum flow: 280L/min

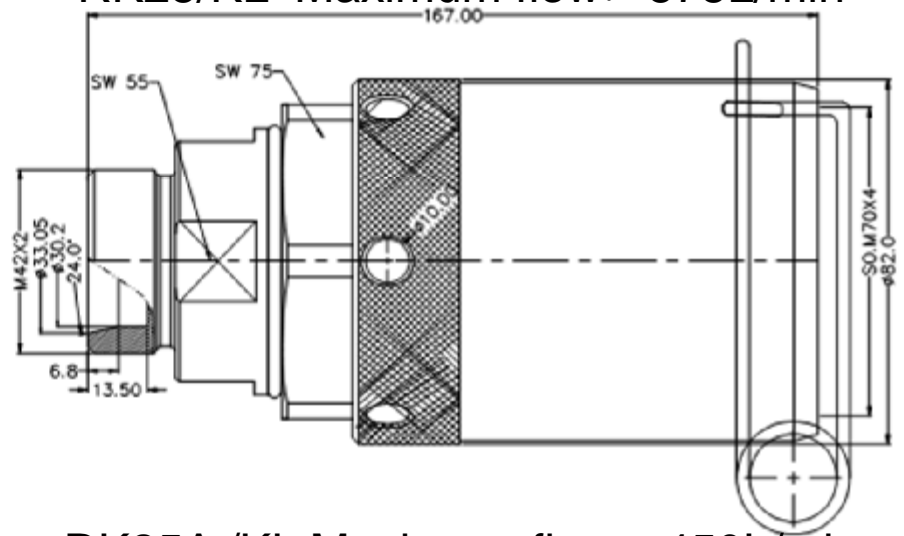
NEW!



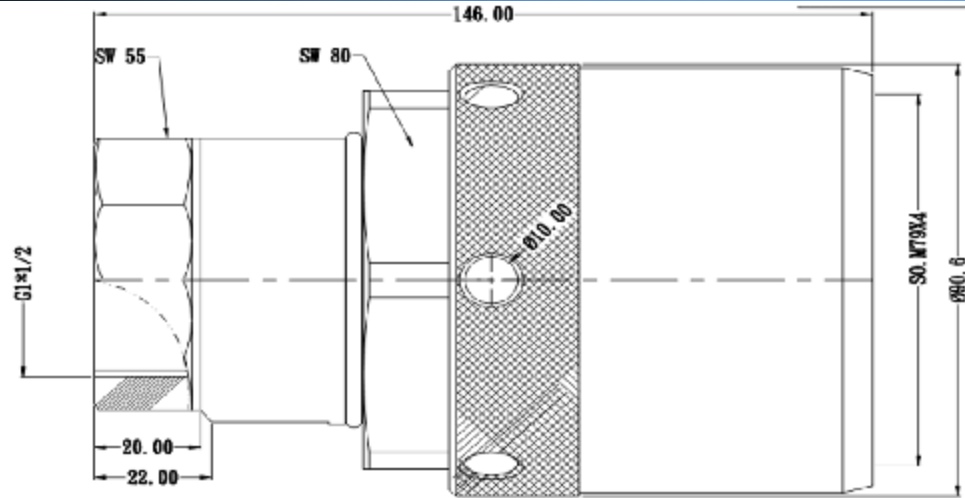
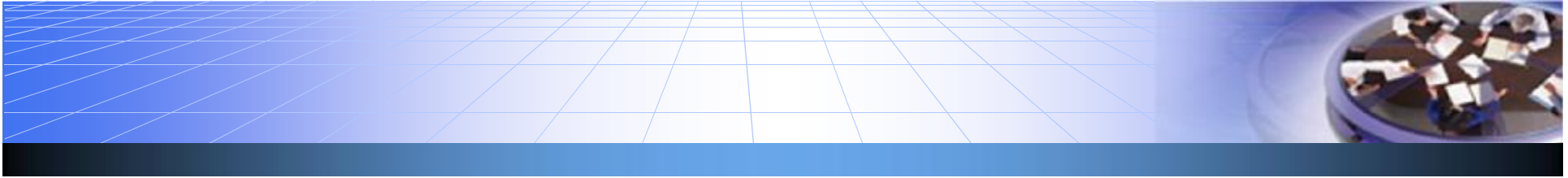
RK25A/KL



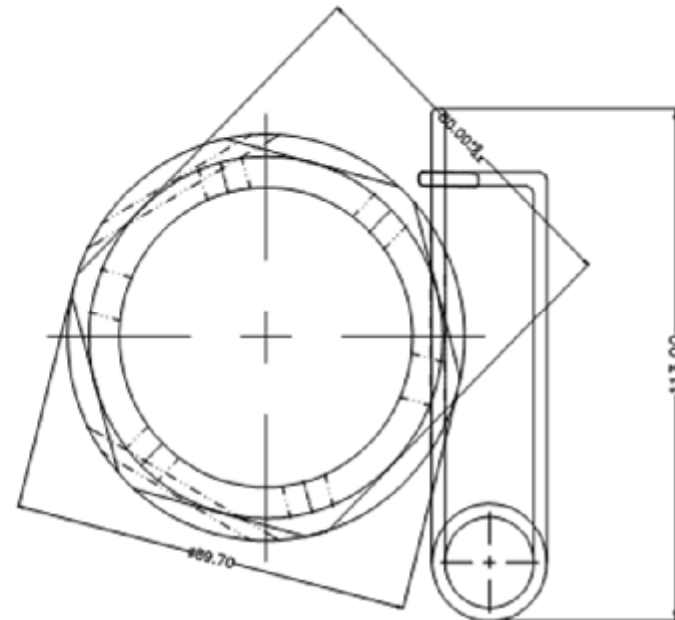
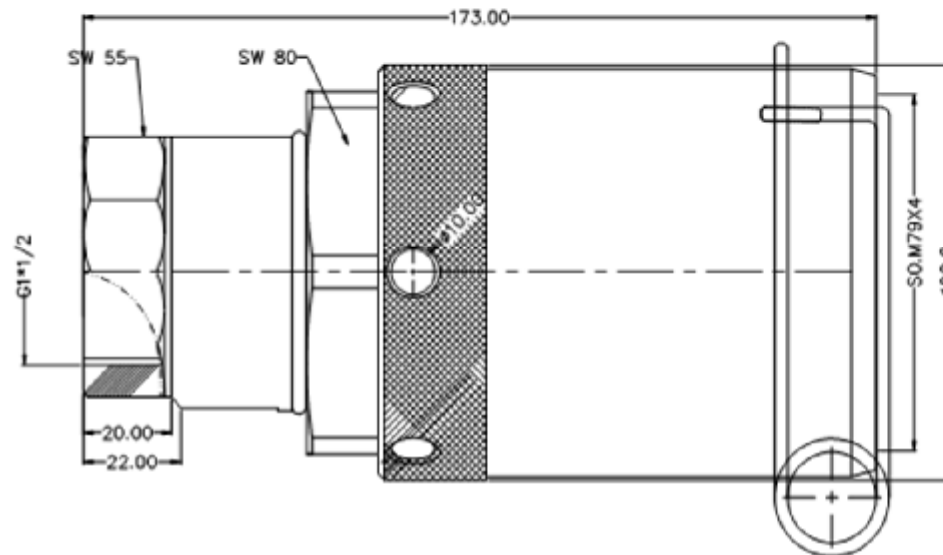
RK25/KL Maximum flow: 575L/min

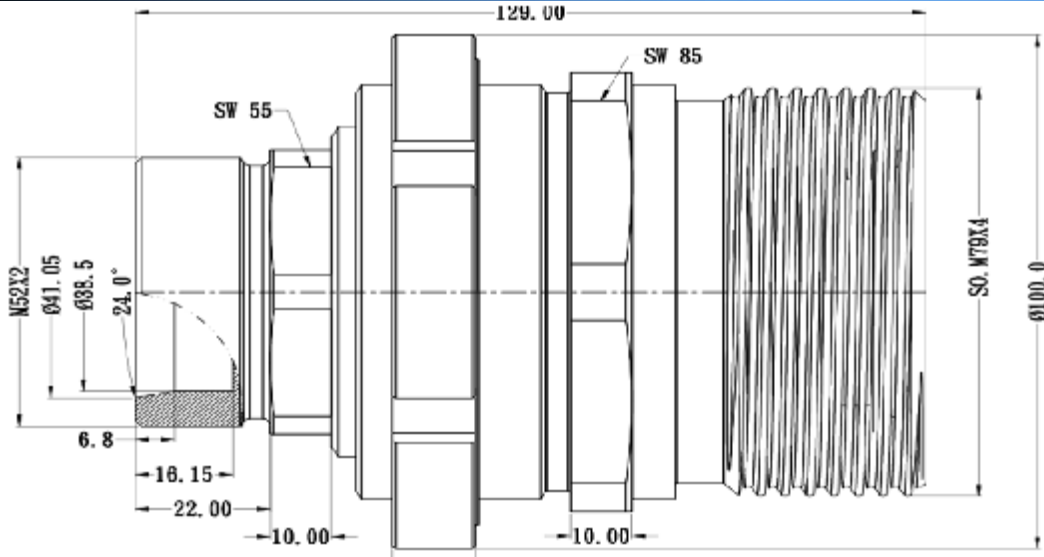
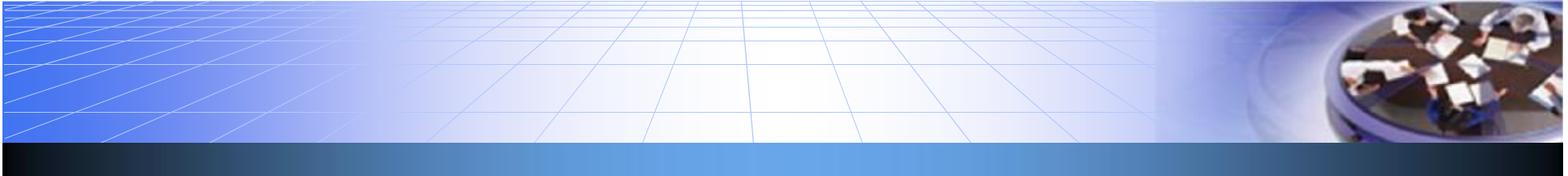


RK25A /KL Maximum flow: 450L/min

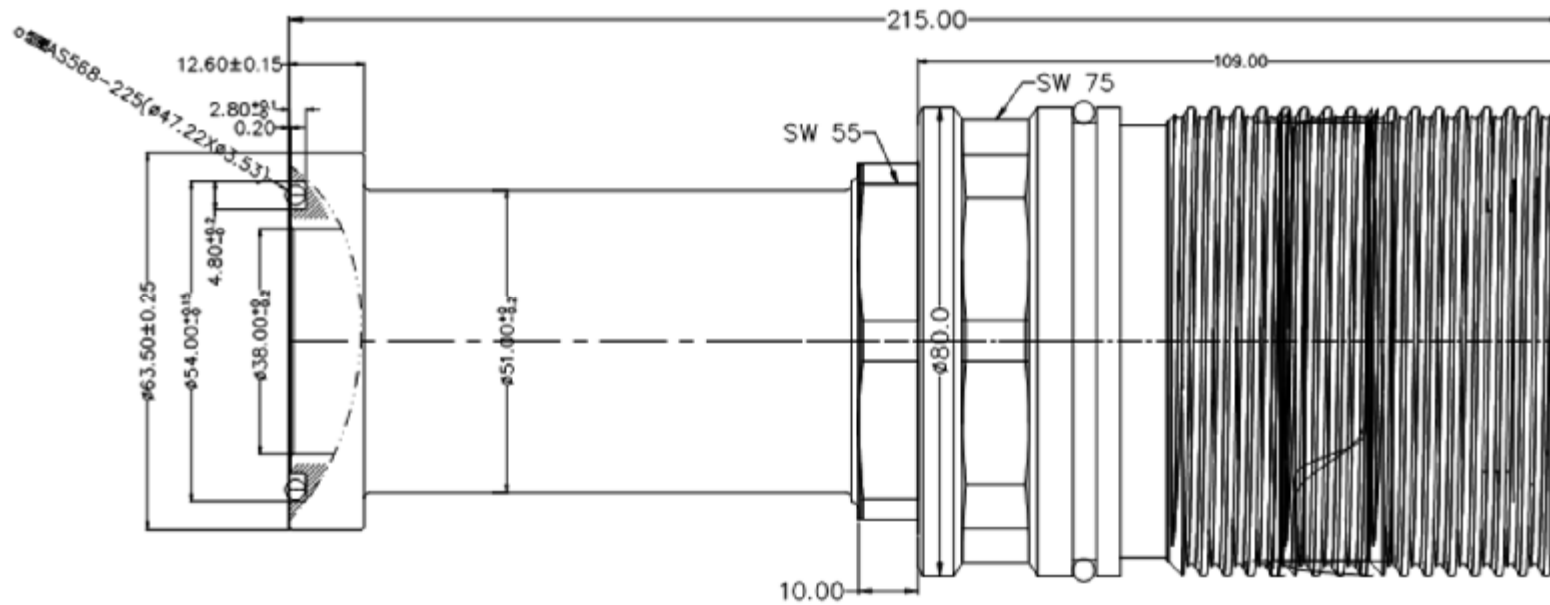
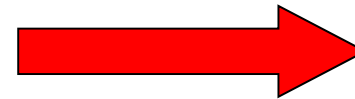


RK/KL improvement
-add safety locks-
positioning pins

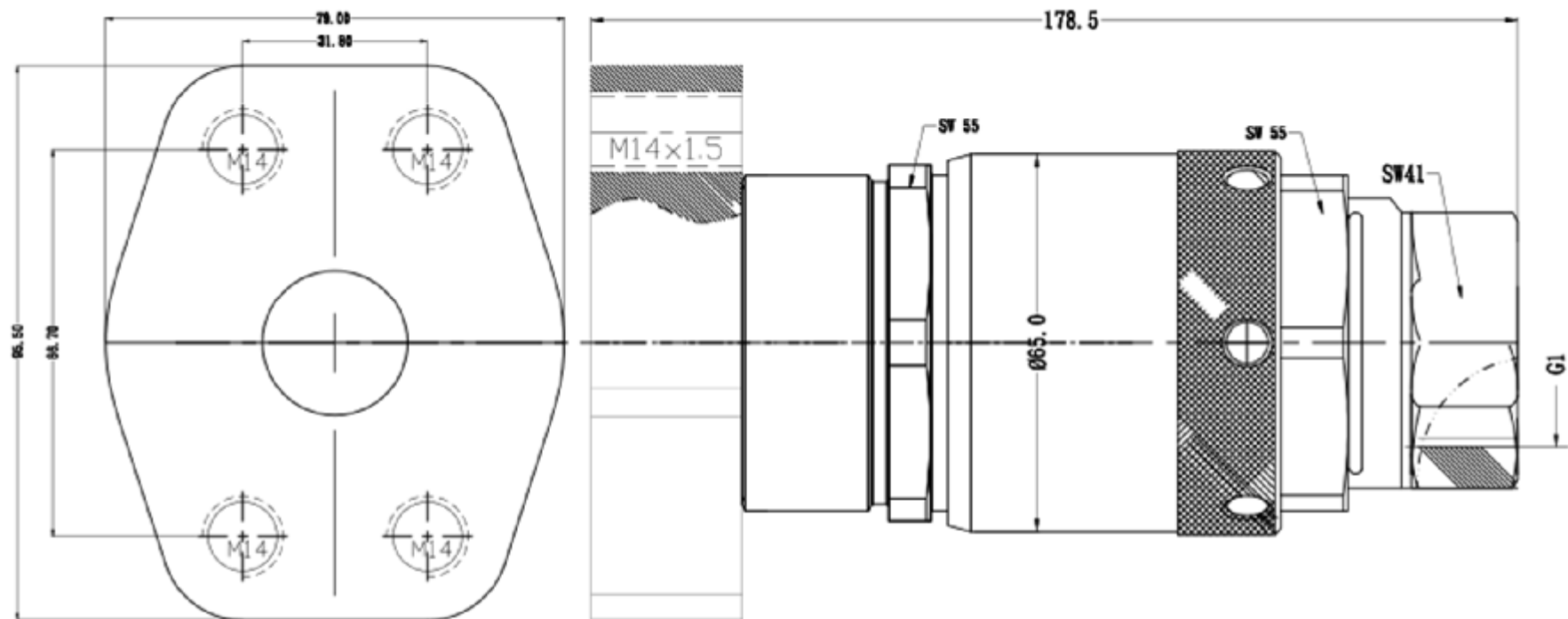




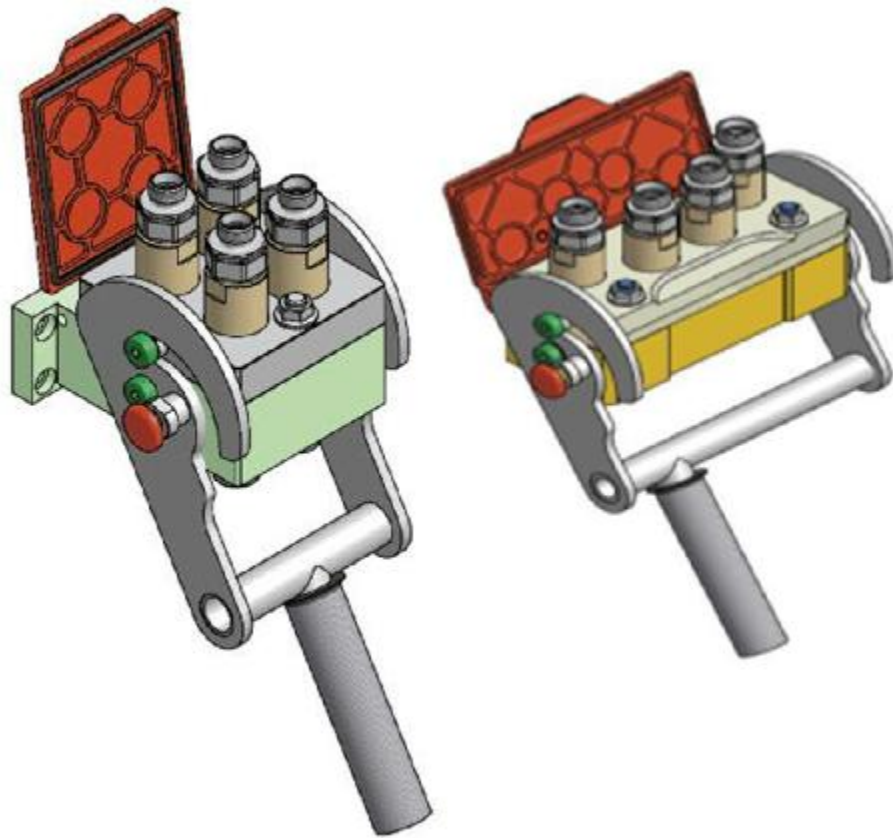
RK/KL improvement
---Flange mounting
interface



RK/KL improvement --- Flange mounting panel



MK Multi-couplings Flat face Series



- Occlusion: Flat face
- Locking : Internal cam and lock pin
- Optional material: Carbon steel
- Finishing Zn-Fe (Cr III) – Zn-Ni
- Thread: BSP – NPT – SAE
- Standard seals: NBR
- Working temperature: -25 °C +100 °C
- Optional seals: FKM, EPDM or more
- Working pressure: 250-350 bar
- Operation under pressure: Allowed (Only movable part)
- Max operating pressure under pressure: Working pressure

PAV ISO 7241-1 A Poppet



- Standard: ISO 7241-1 A
- Occlusion: Poppet
- Locking : Radial balls
- Optional material: Carbon steel, 316L Stainless Steel, Brass
- Finishing Zn-Fe (Cr III)
- Thread: BSP – NPT –RC
- Standard seals: NBR
- Working temperature: -25 °C +100 °C
- Optional seals: FKM, EPDM or more
- Working pressure: 160-350 bar
- Operation under pressure: Not allowed

PPK for tractors ISO 7241-1 A Poppet



- Standard: ISO 7241-1 A
- Sleeve: double-acting push-pull
- Occlusion: Poppet
- Locking : Radial balls
- Optional material: Carbon steel
- Finishing Zn-Fe (Cr III)
- Thread: BSP – NPT –RC
- Standard seals: NBR
- Working temperature: -25 °C +100 °C
- Optional seals: FKM, EPDM or more
- Working pressure: 250 bar
- Operation under pressure: Allowed (Only male body)
- Max operating pressure under pressure: Working pressure

PBV ISO 7241-1 B Poppet



- Standard: ISO 7241-1 B
- Occlusion: Poppet
- Locking : Radial balls
- Optional material: Carbon steel, 316L Stainless Steel, Brass
- Finishing Zn-Fe (Cr III)
- Thread: BSP – NPT
- Standard seals: NBR
- Working temperature: -25 °C +100 °C
- Optional seals: FKM, EPDM or more
- Working pressure: 100-500 bar
- Operation under pressure: Not allowed

PTK With pressure relief valve TEMA T series

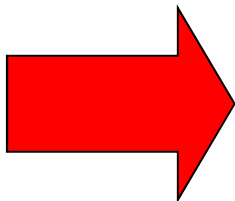


- Interchange: TEMAT Series
- Occlusion: Back Pressure Unloading Valve
- Locking : Radial balls
- Optional material: Carbon steel
- Finishing Zn-Fe (Cr III) – Zn-Ni
- Thread: BSP – NPT
- Standard seals: NBR
- Working temperature: -25 °C +100 °C
- Optional seals: FKM, EPDM or more
- Working pressure: 300-370 bar
- Operation under pressure: Allowed (Both male and female bodies)
- Max operating pressure under pressure: Working pressure

HV Screw on Type



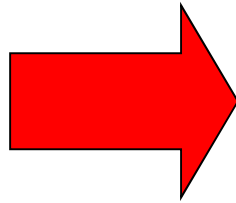
New!



HV75--3 inches
Maximum flow:
1500L/min

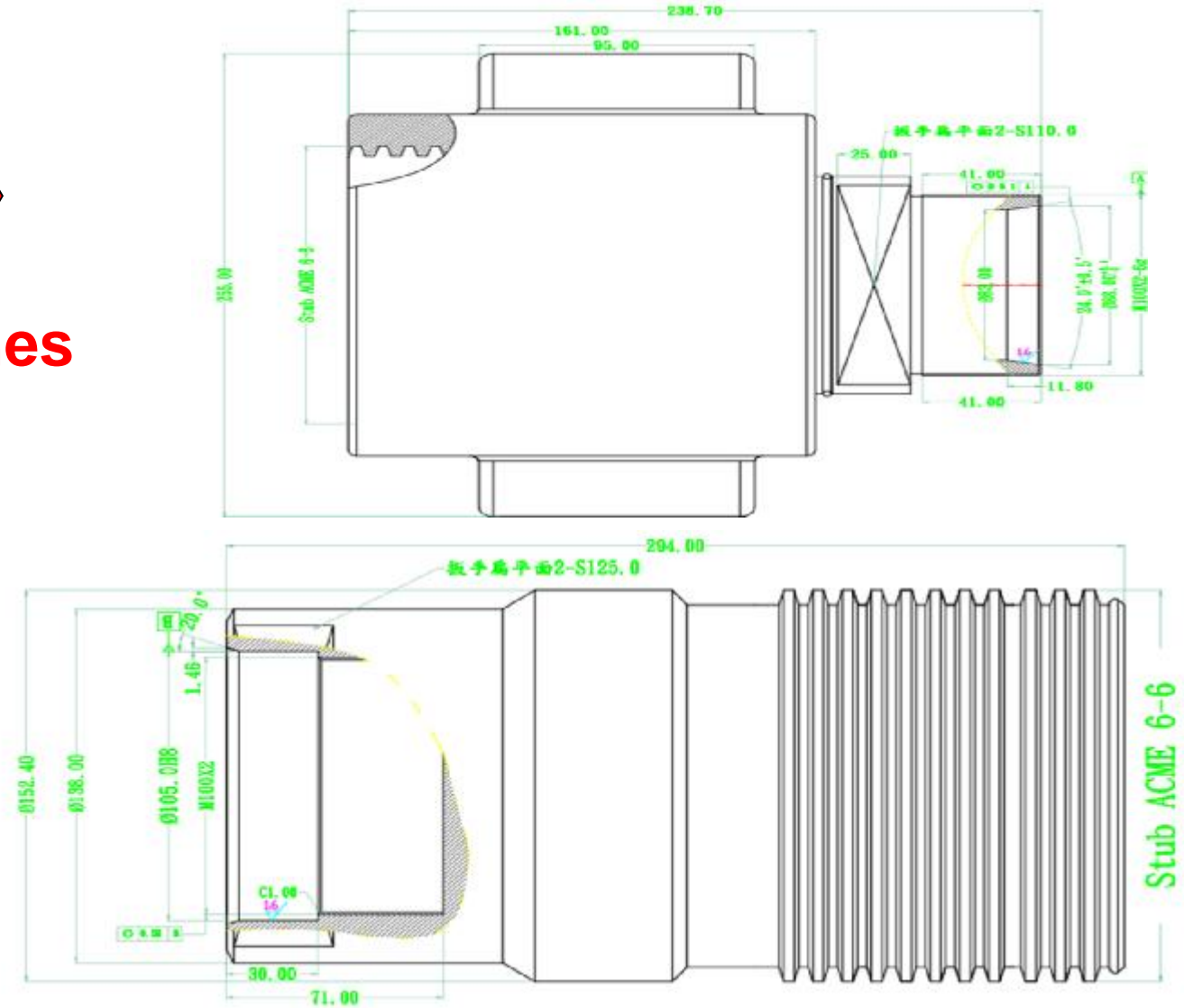
- Interchange: Interchangeable with similar couplings
- Occlusion: Poppet
- Locking : Screw
- Optional material: Carbon steel
- Finishing Zn-Fe (Cr III)
- Thread: BSP – NPT
- Standard seals: NBR
- Working temperature: -25 °C +100 °C
- Optional seals: FKM, EPDM or more
- Working pressure: 350 bar
- Operation under pressure: Allowed (Both male and female bodies)
- Max operating pressure under pressure: 100 bar

New!



HV75--3 inches

- Working pressure:
35MPa
- Maximum flow:
1500L/min



HS ISO 14541 Screw on Type



- Standard: ISO 14541
- Occlusion: Poppet
- Locking : Screw
- Optional material: Carbon steel
- Finishing Zn-Fe (Cr III)
- Thread: BSP – NPT – SAE
- Standard seals: NBR
- Working temperature: -25 °C +100 °C
- Optional seals: FKM, EPDM or more
- Working pressure: 300-450 bar
- Operation under pressure: Allowed (Both male and female bodies)
- Max operating pressure under pressure: Working pressure

PVM/PVS Ultra high pressure 70MPa Screw on



- Standard: ISO 14540
- Occlusion: Poppet, Steel ball
- Locking : Screw
- Optional material: Carbon steel
- Finishing Zn-Fe (Cr III)
- Thread: BSP – NPT
- Standard seals: NBR
- Working temperature: -25 °C +100 °C
- Optional seals: FKM, EPDM or more
- Working pressure: 700 bar
- Operation under pressure: Allowed (Both male and female bodies)
- Max operating pressure under pressure: 100 bar